

OWNER'S HANDBOOK

ROYAL MARINES

A large, faint watermark of the Royal Coat of Arms is centered in the background. It features a shield supported by a lion on the left and a unicorn on the right, topped with a crown. The shield is divided into four quarters, and a banner scrolls across the bottom with the motto 'HONI SOIT QUI MAL Y PENSE'.

STEWART DAWSON
LONDON

Contents:

- Timeless timepiece 1
- David Stewart Dawson 3
- Our mission and vision 5
- Royal Marines 7
- Technical information 9
- Movement Specifications 11
- Setting time and date 13
- Water resistance levels 15

An everyday style accessory

We would like to personally thank you for purchasing a Stewart Dawson London timepiece.

This is your digital Owner's Handbook and Instruction leaflet to get the best out of your timepiece, knowing more about the heritage and how to take care about your Stewart Dawson London watch.

This is the story of one man's quest for excellence. Stewart Dawson became the byword for superior quality, extraordinary innovation, and incomparable value in timepieces. Building on the British heritage of hand-crafted watches, he embraced emerging American technology and enthusiastically developed a brand known not only in England, but also in Australia and New Zealand.

In 2018, Stewart Dawson London assured his legacy by relaunching products executed in a modern style yet reminiscent of enduring vintage designs.

S·D&C^o



DAVID STEWART DAWSON



One and a half century of authentic brand history



David Stewart Dawson was one of the most influential Masters of Watches from last century. It was 1871 when David Stewart Dawson, then 22 years old, founded an innovative and successful watches and jewelry store in Liverpool. Not long after, David Stewart Dawson had established itself in the renowned boutique in London, Regent Street.

For one and a half century our brand has been historically famous for its exclusive collaborations with leading watch brands such as Rolex, Omega, Jaeger-LeCoultre and other prestigious watchmakers for rare and luxurious timepieces inspired by a timeless aesthetic with the ambition to create a distinctive and recognizable collection of technically perfect watches with a unique sophisticated look.



Omega and Rolex examples of Stewart Dawson early collaborations

S·D&C^o



OUR MISSION AND VISION

Italian Design, Swiss Technology, British Soul: this is the essence of the brand

Our mission is to build the best timepieces vintage inspired and bring them into the future, bridging the timeless esthetics of our authentic British heritage, with our know-how and obsession for technical perfection and worldwide recognized Italian style.

At Stewart Dawson London we are always very attentive to design our watches suitable for contemporary living, keeping an eye on our strong heritage.

We are proud that for our customers wearing one of our timepieces means to wrap around the wrist centuries of brand story together with the features of timepieces that are expertly crafted with high-end Swiss technology enriched with world-famous Italian flair.

S·D&C^o



The importance of reliability in all conditions

Stewart Dawson introduces the Royal Marines collection, a modern reinterpretation of iconic diving watches, with designs inspired by the sixties. These models are popular with sportsmen, professional divers and explorers alike.

The Royal Marines collection is reminiscent of these vintage designs, but is executed in a modern, contemporary style. Durability and strength are the watchwords that define this series.

The case has slim horns with square surfaces that outline the watch's pleasantly beveled geometries. This highlights the diving bezel and makes it perfectly mobile.

All twelve indexes have a generous coating of Super-LumiNova®, as do the hour and minute hands to maximize readability in the dark. The same technical coating is applied to the top triangular index on the ceramic bezel.



S·D&C^o



STEWART DAWSON
LONDON

ROYAL MARINES
ROTOR SELF-WINDING
330ft-100m

SWISS MADE

10

TECHNICAL INFORMATION

- Automatic Swiss Movement
- 25 jewels (26 SW200)
- 38 hours power reserve
- Anti-shock system
- Screw down crown
- Super-LumiNova® dial indexes and hands markers
- Anti-reflective sapphire crystal
- Unique engraved serial number

Diameter:	42 mm
Thickness:	12,5 mm
Calibre:	ETA 2824 or SW 200
Case:	Stainless steel 316L
Water Resistance:	10 ATM / 100 mt
Timing Tolerance:	-20 ~ +40 sec per day
Lugs:	22 mm

S·D&C^o



MOVEMENT SPECIFICATIONS

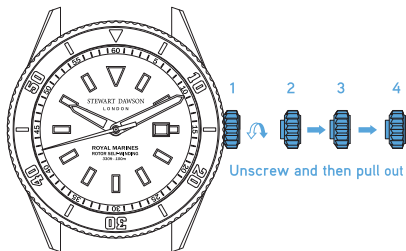
ETA 2824 - SW 200

Diameter:	11 1/2''' mm
Movement height:	4.6 mm
Running time:	38 Hours
Number of jewels:	21
Angle lift of balance:	50°
Frequency:	28'800 A/h
Lugs:	22 mm

S·D&C^o



SETTING TIME AND DATE



1. Crown screw-in position
2. Manual winding
3. Date setting
4. Time setting

In normal position 1 (wearing position) the crown is positioned against the case, the crown ensures that the watch is water-resistant.






ATTENTION:

IF THE CROWN IS NOT SCREWED-IN (POSITION 1) WATER CAN PENETRATE INTO THE MOVEMENT AND DAMAGE IT PERMANENTLY.

SD&C®



WATER RESISTANCE LEVELS

	30 meters 3 ATM 100 feet	Your watch can withstand accidental splashes.
	50 meters 5 ATM 165 feet	Your watch can withstand splashes, shower and is suitable for swimming. It is not suitable for water sports, pool-side diving or sea diving.
	100 meters 10 ATM 330 feet	Your watch is suitable for swimming, snorkelling but not suitable for high board diving or aqua diving.
	200 meters 20 ATM 660 feet	Your watch is suitable for swimming, high-impact water sports and scuba diving.
	More than 300 meters 30 ATM 990 feet	Suitable for all high-impact water sports, scuba-diving and saturation diving.

